



## Mary Mildred Allen

August 16, 1928 - December 27, 2019

Mary Mildred Allen, 91, of Crawfordville, passed away on December 27, 2019. She was born August 16, 1928 in Piketon, Ohio to John & Grace Foster. She was a Homemaker and also worked for J.C. Penny's. Mildred moved to Crawfordville from Tallahassee in 1978, where she was an active member at the Wakulla County Senior Center, went to Curves and exercised 3 days a week, where she won the Attendance Award and she loved to walk in the park in Crawfordville. She was of the Methodist faith.

Survivors include her daughter Barbara Neeley, son Tim Allen and his wife Patricia, 3 sisters Ada Mae Farmer, Ethel Mosher & "B" Cutlip, 4 grandchildren and 5 great grandchildren.

The family will receive friends during the visitation on Saturday, January 4, 2020, 11:00am-1:00pm in the Harvey Young Chapel at Family Funeral Home 3106 Crawfordville Hwy. A graveside service will immediately follow at St. Elizabeth Ann Seton Cemetery in Medart, Florida.

Skip & Trey Young are assisting the family with their arrangements. 850-926-5919 Familyfhc.com

# Cemetery Details

## St. Elizabeth Ann Seton

3609 Coastal Highway  
Crawfordville, FL 32327

# Previous Events

## Visitation

JAN 4. 11:00 AM - 1:00 PM (ET)

Family Funeral Home-Harvey Young Chapel  
3106 Crawfordville Hwy.  
Crawfordville, FL 32327  
paula@familyfhc.com

## Graveside Service

JAN 4. 1:30 PM (ET)

St. Elizabeth Ann Seton  
3609 Coastal Highway  
Crawfordville, FL 32327

# Tribute Wall

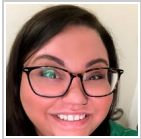


“ *Young Family Funeral Home created a Tribute Video in memory of Mary Mildred Allen*



---

**Family Funeral Home and Cremation Services** - December 31, 2019 at 01:14 PM



“ *We miss you mamaw*

---

**Dosha Emmalina** - September 02, 2020 at 12:41 AM